

chefwear®

chefwear.com



Virginia Culinary Issue

more choices than ever



Navy Chalkstripe [cw01]



Charcoal [cw32]



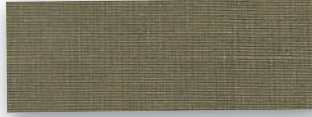
Flying Pigs [cw87]



Utensils [cw06]



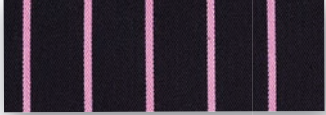
Grain [cw34]



Arctic Camo [cw89]



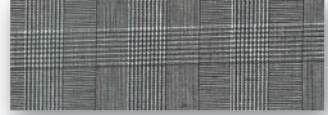
Black/Pink Chalkstripe [cw08]



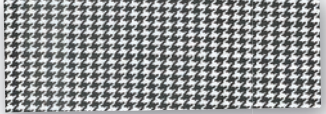
Black Chalkstripe [cw35]



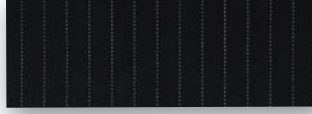
Glenn Plaid [cw93]



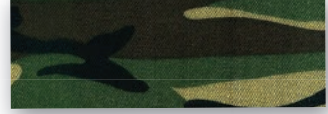
European Houndstooth [cw11]



Black/Grey Pinstripe [cw50]



Camo [cw96]



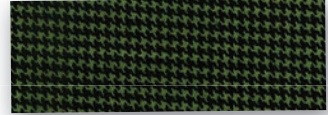
Mushrooms [cw13]



Carnivale [cw51]



Olive Houndstooth [cw98]



Artichoke [cw16]



Navy Houndstooth [cw58]



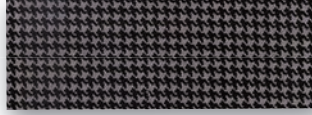
Vintage [cw203]



Black Chile Pepper [cw18]



Grey Houndstooth [cw59]



Veggies [cw207]



Lemons [cw21]



Black Herringbone [cw64]



Donuts [cw208]



Aqua Sealife [cw25]



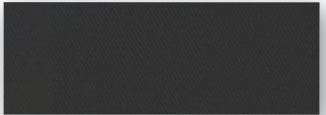
Cupcakes [cw67]



Prime Cuts [cw250]



Black [cw30]



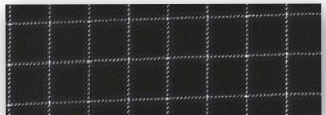
Pacific Rim [cw82]



Coastal Harvest [cw251]



Matrix [cw31]



Tribal Spirit [cw83]



Hibiscus Heaven [cw253]



Comfort is everything when you are in the kitchen all day. Our most popular unisex pant, the Ultimate Cotton Pant, was created with a relaxed fit and cotton fabrication to keep you looking and feeling your best.

Ultimate Cotton Pant

- 6 oz. 100% cotton twill
- Unisex pant
- 2" elastic waistband with drawstring
- Four extra-deep pockets, both front and back
- Sizes XS-5X (Add \$4 ea. for 3X-5X)

ITEM	DESCRIPTION	QTY.	PRICE
CW3500	Ultimate	1-9	35.95 ea.
		10-19	27.95 ea.
		20+	23.95 ea.
	Short		35.95 ea.
	Long and unhemmed		38.95 ea.
	Sizes S-2X only		
	Available in Black [cw30]		
	Black Chalkstripe [cw35]		
	Black/Grey Pinstripe [cw50]		

Kristen Wheeler
Todd Jurich's Bistro

Women's Classic Executive Coat page 39

Women's Cotton Low Rise Pant page 14



chefwear®

ON THE COVERS

Front:

Antonio Caruana

Luce

Vented Vibe Chef Coat page 24

Traditional Poly Blend Pant page 7

Back:

David Everett, Scott Hoyland

David Everett Restaurant Group



Black [cw30]

Chefwear's original chef pant, the Baggy, began as a simple need for one chef to be comfortable, which led to the creation of a culinary industry revolution.

Baggy Cotton Pant

- 6 oz. 100% cotton twill
- 3" elastic waistband with drawstring
- Four extra-deep pockets, both front and back
- Tapered ankles and roomier fit
- Sizes XS-5X (Add \$4 ea. for 3X-5X)

ITEM	DESCRIPTION	QTY.	PRICE
CW3000	Baggy	1-9	35.95 ea.
		10-19	27.95 ea.
		20+	23.95 ea.



[cw30]



[cw11]



[cw35]



[cw50]



[cw82]



[cw18]



[cw83]



[cw207]



[cw06]



[cw87]

[cw250]
NEW[cw253]
NEW

patterns / colors

European Houndstooth [cw11] Black [cw30] Black/Grey Pinstripe [cw35] Black Chalkstripe [cw50]
 Pacific Rim [cw82] Black Chile Pepper [cw18] Tribal Spirit [cw83] Veggies [cw207] Utensils [cw06]
 Flying Pigs [cw87] Prime Cuts [cw250] Hibiscus Heaven [cw253]



Rob Asbury
Todd Jurich's Bistro
Jogger Pant page 7



Graphite [cw105]

Traditional Rip Stop Pant

- 4.4 oz. 84% cotton, 13% polyester, 3% spandex
- Lightweight comfort
- 2" elastic waistband with drawstring
- Front and back pockets
- Relaxed straight-legged
- Sizes XS-5X (Add \$4 ea. for 3X-5X)

ITEM	DESCRIPTION	QTY.	PRICE
CW3101	Rip Stop	1-9	29.95 ea.
		10-19	27.95 ea.
		20+	24.95 ea.



Black [cw30]



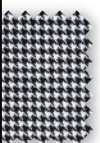
[cw111]



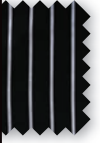
[cw30]



Black/Grey Pinstripe [cw50]



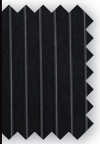
[cw11]



[cw35]



[cw30]



[cw50]

Jogger Pant

- Black Twill: 6.2 oz. 65% polyester, 35% cotton
- Indigo Denim: 8.5 oz. 100% cotton
- 1.5" elastic back waistband with belt loops
- Unisex, flat front with zipper fly
- Slanted inset side pockets
- 2 cargo pockets with snap flap closure
- 2 back pockets with snap flap closure
- Elastic at the ankle
- Black Twill: Sizes XS-4X (Add \$4 ea. for 3X-4X)
- Indigo Denim: Sizes XS-2X

ITEM	DESCRIPTION	QTY.	PRICE
CW3320	Jogger	1-9	38.95 ea.
		10-19	30.95 ea.
		20+	26.95 ea.

Traditional Poly Blend Pant

- 6.2 - 6.8 oz. 65% polyester, 35% cotton
- 2" elastic waistband with drawstring
- 2 side seam pockets
- 2 back patch pockets
- Straight leg
- Sizes XS-5X (Add \$4 ea. for 3X-5X)

ITEM	DESCRIPTION	QTY.	PRICE
CW3165	Poly Blend	1-9	23.95 ea.
		10-19	21.95 ea.
		20+	18.95 ea.

patterns / colors

Black [cw30] Graphite [cw105] Indigo Denim [cw111] European Houndstooth [cw11]
 Black Chalkstripe [cw35] Black/Grey Pinstripe [cw50]



Black/Grey Pinstripe [cw50]



Glenn Plaid [cw93]

Traditional Cotton Pant

- 6 oz. 100% cotton twill
- 2" elastic waistband with drawstring
- Zipper fly
- Front and back pockets
- Straight-legged
- Sizes XS-5X (Add \$4 ea. for 3X-5X)

ITEM	DESCRIPTION	QTY.	PRICE
CW3100	Traditional	1-9	35.95 ea.
		10-19	27.95 ea.
		20+	23.95 ea.

Tailored Cotton Pant

- 6 oz. 100% cotton twill
- Elastic inset
- Front and back pockets
- Straight-legged
- Belt loops
- Permanent crease
- Zipper fly
- Sizes XS-5X (Add \$4 ea. for 3X-5X)

ITEM	DESCRIPTION	QTY.	PRICE
CW3640	Tailored	1-9	38.95 ea.
		10-19	30.95 ea.
		20+	26.95 ea.



Black [cw30]



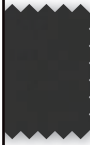
[cw205]



[cw11]



[cw35]



[cw30]



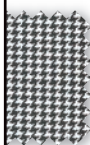
Black Chalkstripe [cw35]



[cw30]



[cw205]



[cw11]



[cw35]

Ultimate Cotton Blend Pant

- 7 oz. 60% cotton, 40% polyester twill
- 2" elastic waistband with drawstring
- Stain- and crease-resistant
- Relaxed fit
- Sizes XS-5X (Add \$4 ea. for 3X-5X)

ITEM	DESCRIPTION	QTY.	PRICE
CW3700	Ultimate Blend	1-23	29.95 ea.
		24+	25.95 ea.

Traditional Cotton Blend Pant

- 7 oz. 60% cotton, 40% polyester twill
- 2" elastic waistband with drawstring
- Stain- and crease-resistant
- Zipper fly
- Straight-legged
- Sizes XS-5X (Add \$4 ea. for 3X-5X)

ITEM	DESCRIPTION	QTY.	PRICE
CW3900	Traditional Blend	1-23	29.95 ea.
		24+	25.95 ea.

patterns / colors

Black/Grey Pinstripe [cw50] Black [cw30] Charcoal [cw32] European Houndstooth [cw11] Black Herringbone [cw64]
 Black Chalkstripe [cw35] Glenn Plaid [cw93] Black on Black Stripe [cw205]



James White
The Trellis Bar & Grill
Vented Lightweight
Coat page 20
Cargo Cotton Pant
page 10



European Houndstooth [cw11]

Cargo Cotton Pant

- 6 oz. 100% cotton twill
- 2" elastic waistband with drawstring
- Six extra-deep pockets: front, side and back
- Roomy with clean, crisp lines
- Relaxed fit
- Sizes XS-5X (Add \$4 ea. for 3X-5X)

ITEM	DESCRIPTION	QTY.	PRICE
CW3200	Cargo	1-9	38.95 ea.
		10-19	30.95 ea.
		20+	26.95 ea.
	Long and unhemmed		41.95 ea.
	Sizes S-2X only		
	Available in Black [cw30]		
	Black/Grey Pinstripe [cw50]		
	Arctic Camo [cw89]		



Prime Cuts [cw250]



Grain [cw34]

Ultimate Cotton Chef Short

- 6 oz. 100% cotton twill
- 2" elastic waistband with drawstring
- Four extra deep pockets, both front and back
- Relaxed fit
- Sizes XS-5X (Add \$4 ea. for 3X-5X)

ITEM	DESCRIPTION	QTY.	PRICE
CW3805	Ultimate Short	1-9	24.95 ea.
		10-19	22.95 ea.
		20+	20.95 ea.

Cargo Cotton Short

- 6 oz. 100% cotton twill
- 2" elastic waistband with drawstring
- Six extra-deep pockets: front, side and back
- Relaxed fit
- Sizes XS-5X (Add \$4 ea. for 3X-5X)

ITEM	DESCRIPTION	QTY.	PRICE
CW3850	Cargo Short	1-9	26.95 ea.
		10-19	24.95 ea.
		20+	21.95 ea.

Ultimate Rip Stop Short

- 4.4 oz. 84% cotton, 13% polyester, 3% spandex
- Lightweight comfort
- 2" elastic waistband with drawstring
- Four extra deep pockets, both front and back
- Relaxed fit
- Sizes XS-5X (Add \$4 ea. for 3X-5X)

ITEM	DESCRIPTION	QTY.	PRICE
CW3815	Rip Stop Short	1-9	22.95 ea.
		10-19	20.95 ea.
		20+	19.95 ea.



Graphite [cw105]

patterns / colors

European Houndstooth [cw11] Black [cw30] Charcoal [cw32] Grain [cw34] Black/Grey Pinstripe [cw50]
Arctic Camo [cw89] Camo [cw96] Prime Cuts [cw250] Graphite [cw105]



Sherrie Webster
Taste

**Women's Short Sleeve
Primary Plastic Button
Jacket page 43**

**Women's Cotton Low Rise
Pant page 14**



[cw30]

Available in Black Only [cw30]



[cw30]

Available in Black Only [cw30]

Chef Leggings

- 8.1 oz. 69% cotton, 28% polyester, 3% spandex
- Contoured waistband
- 2 front faux pockets, 2 back pockets
- Fitted around the ankle
- 31" inseam
- Sizes XS-2X

ITEM	DESCRIPTION	QTY.	PRICE
CW3353	Legging	1-9	32.95 ea.
		10-19	24.95 ea.
		20+	20.95 ea.

Chef Ankle Leggings

- 8.1 oz. 69% cotton, 28% polyester, 3% spandex
- Contoured waistband
- 1 back inseam pocket
- Small slit at the ankle
- 29" inseam
- Legging falls just above the ankle
- Sizes XS-2X

ITEM	DESCRIPTION	QTY.	PRICE
CW3355	Ankle Legging	1-9	29.95 ea.
		10-19	21.95 ea.
		20+	17.95 ea.



**Cat Bashlor
Taste**

**Women's Classic
Piped Executive
Coat page 39**

**Ultimate Cotton
Pant page 3**



Women's Cotton Low Rise Pant

- 6 oz. 100% cotton twill
- 2" elastic waistband with drawstring
- Front and back pockets
- Low cut with shorter rise
- Slim fit, straight leg
- Sizes XS-5X (Add \$4 ea. for 3X-5X)

ITEM	DESCRIPTION	QTY.	PRICE
CW3150	Low Rise	1-9	35.95 ea.
		10-19	27.95 ea.
		20+	23.95 ea.

Short	35.95 ea.
Long	38.95 ea.

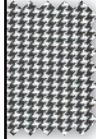
Sizes XS-XL only

Available in Black [cw30]

Black/Pink Chalkstripe [cw08]



[cw30]



[cw11]

European Houndstooth [cw11]



[cw30]

Available in Black Only [cw30]

Women's Cotton Blend Low Rise Pant

- 7 oz. 60% cotton, 40% polyester twill
- 2" elastic waistband with drawstring
- Front and back pockets
- Sizes XS-5X (Add \$4 ea. for 3X-5X)

ITEM	DESCRIPTION	QTY.	PRICE
CW3950	Low Rise	1-23	29.95 ea.
		24+	25.95 ea.

Women's Cotton Low Rise Cargo Pant

- 6 oz. 100% cotton twill
- 2" elastic waistband with drawstring
- Lower rise
- Deep side and back pockets
- 2 cargo pockets
- Roomy with clean, crisp lines
- Slim fit, straight leg
- Sizes XS-5X (Add \$4 ea. for 3X-5X)

ITEM	DESCRIPTION	QTY.	PRICE
CW3250	Women's Cargo	1-9	38.95 ea.
		10-19	30.95 ea.
		20+	26.95 ea.

patterns / colors

Black [cw30] European Houndstooth [cw11] Black/Grey Pinstripe [cw50] Black/Pink Chalkstripe [cw08]
 Prime Cuts [cw250] Coastal Harvest [cw251] Hibiscus Heaven [cw253]



Russell Sawyer
Bodega

**Lightweight Denim Crossover
Jacket page 35**

Tailored Cotton Pant page 8



Royal Blue [cw116]

Long Sleeve Primary Plastic Button Jacket

- 7.5 oz. 65% polyester, 35% cotton twill
- Durable, wrinkle resistant fabric
- Breast patch and split sleeve pockets
- Plastic buttons
- Square French cuffs
- Women's companion style available on page 43
- Sizes XS-5X (Add \$4 ea. for 3X-5X)

ITEM	DESCRIPTION	QTY.	PRICE
CW4410	Long Sleeve	1-23	22.95 ea.
	Colors	24+	19.95 ea.
CW4410-40	Long Sleeve	1-23	16.95 ea.
	White	24+	14.95 ea.



[cw78]



[cw79]



[cw90]



[cw30]



[cw40]



[cw114]



[cw115]



[cw116]



[cw117]



[cw127]



[cw146]



[cw147]



[cw148]



Burnt Orange [cw117]

Short Sleeve Primary Plastic Button Jacket

- 7.5 oz. 65% polyester, 35% cotton twill
- Durable, wrinkle resistant fabric
- Breast patch and split sleeve pockets
- Plastic buttons
- Women's companion style available on page 43
- Sizes XS-5X (Add \$4 ea. for 3X-5X)

ITEM	DESCRIPTION	QTY.	PRICE
CW4455	Short Sleeve	1-23	20.95 ea.
	Colors	24+	18.95 ea.
CW4455-40	Short Sleeve	1-23	14.95 ea.
	White	24+	12.95 ea.



[cw78]



[cw79]



[cw90]



[cw30]



[cw40]



[cw116]



[cw117]

patterns / colors

Red [cw78] Kelly Green [cw79] Heather Grey [cw90] Black [cw30] White [cw40] Gold [cw114] Silver [cw115]
 Royal Blue [cw116] Burnt Orange [cw117] Purple [cw127] Heather Blue [cw146] Olive [cw147] Maroon [cw148]



White [cw40]

[cw40]

[cw30]

[cw90]



Black [cw30]

[cw40]

[cw30]

Long Sleeve Primary Cloth-Knot Button Jacket

- 7.5 oz. 65% polyester, 35% cotton twill
- Durable, wrinkle resistant fabric
- Breast patch and split sleeve pockets
- Cloth-knot buttons (Heather Grey: black cloth-knot buttons)
- Square French cuffs
- Women's companion style available on page 42
- Sizes XS-5X (Add \$4 ea. for 3X-5X)

ITEM	DESCRIPTION	QTY.	PRICE
CW4400-30	Black	1-23	23.95 ea.
		24+	20.95 ea.
CW4400-40	White	1-23	17.95 ea.
		24+	15.95 ea.
CW440T-40	Tall White	1-23	20.95 ea.
		24+	18.95 ea.
CW440T-30	Tall Black	1-23	26.95 ea.
		24+	24.95 ea.
CW4400-90	Grey XS-2X only	1-23	23.95 ea.
		24+	20.95 ea.

Short Sleeve Primary Cloth-Knot Button Jacket

- 7.5 oz. 65% polyester, 35% cotton twill
- Durable, wrinkle resistant fabric
- Breast patch and split sleeve pockets
- Cloth-knot buttons
- Women's companion style available on page 42
- Sizes XS-5X (Add \$4 ea. for 3X-5X)

ITEM	DESCRIPTION	QTY.	PRICE
CW4450-30	Black	1-23	21.95 ea.
		24+	19.95 ea.
CW4450-40	White	1-23	15.95 ea.
		24+	13.95 ea.



Black [cw30]



White [cw40]

Long Sleeve Primary Lightweight Jacket

- 6 oz. 65% polyester, 35% cotton twill
- Breast patch and split sleeve pockets
- Plastic buttons
- Square French cuffs
- Sizes XS-5X (Add \$4 ea. for 3X-5X)

ITEM	DESCRIPTION	QTY.	PRICE
CW4415-30	Black	1-23	22.95 ea.
		24+	19.95 ea.
CW4415-40	White	1-23	16.95 ea.
		24+	14.95 ea.

Short Sleeve Primary Lightweight Jacket

- 6 oz. 65% polyester, 35% cotton twill
- Breast patch and split sleeve pocket
- Plastic buttons
- Sizes XS-5X (Add \$4 ea. for 3X-5X)

ITEM	DESCRIPTION	QTY.	PRICE
CW4456-30	Black	1-23	20.95 ea.
		24+	18.95 ea.
CW4456-40	White	1-23	14.95 ea.
		24+	12.95 ea.

SET THE TREND IN CHEFWEAR

Check out our website to find great new styles, patterns, accessories and more.

chefwear.com

patterns / colors

Black [cw30] White [cw40] Heather Grey [cw90]



Black [cw30]

[cw40]

[cw30]



White [cw40]

[cw40]

[cw30]

Vented Lightweight Coat

- 4.5 oz. 65% polyester, 35% cotton
- Short sleeves
- Breast patch pocket and split sleeve pocket
- Cloth-covered buttons
- Women's companion style available on page 40
- Sizes XS-5X (Add \$4 ea. for 3X-5X)

ITEM	DESCRIPTION	QTY.	PRICE
CW5612	Vented	1-9	40.95 ea.
	Lightweight	10-19	38.95 ea.
		20+	35.95 ea.

Long Sleeve Vented Lightweight Coat

- 4.5 oz. 65% polyester, 35% cotton
- Breast patch pocket and split sleeve pocket
- Square French cuffs
- Cloth-covered buttons
- Women's companion style available on page 40
- Sizes XS-5X (Add \$4 ea. for 3X-5X)

ITEM	DESCRIPTION	QTY.	PRICE
CW5662	Long Sleeve	1-9	45.95 ea.
	Vented	10-19	43.95 ea.
	Lightweight	20+	40.95 ea.



Back vent detail



Underarm vent detail

NEW



White [cw40]

[cw40]

[cw30]

Mesh Back Chef Jacket

- 4.5 oz. 65% polyester, 35% cotton twill
- Full mesh back ventilation
- Breast patch pocket and split sleeve pocket
- Square French cuffs
- Cloth-covered buttons
- Sizes XS-5X (Add \$4 ea. for 3X-5X)

ITEM	DESCRIPTION	QTY.	PRICE
CW5663	Mesh Back	1-9	32.95 ea.
		10-19	30.95 ea.
		20+	28.95 ea.



Back mesh detail

patterns / colors

Black [cw30] White [cw40]

Harry Drew-Wingfield
Nouvelle Restaurant

Trek Chef Jacket page 23

Ultimate Cotton Pant
page 3





**Thomas Yager
Taste**

**Long Sleeve Vented
Lightweight Coat
page 20**

**Ultimate Cotton
Pant page 3**



Graphite [cw105]

[cw40]

[cw30]

[cw105]

Snap Front Chef Jacket

- Colors: 4.6 oz. 65% polyester, 35% cotton
- White: 5.5 oz. 65% polyester, 35% cotton
- Back and side mesh ventilation
- Asymmetrical
- Pewter colored snaps
- Split sleeve thermometer pocket
- Side vents
- Sizes XXS-5X (Add \$4 ea. for 3X-5X)

ITEM	DESCRIPTION	QTY.	PRICE
CW4315	Snap Front	1-9	23.95 ea.
		10-19	23.45 ea.
		20+	22.95 ea.



Back mesh detail



White [cw40]



Black/Graphite [cw305]

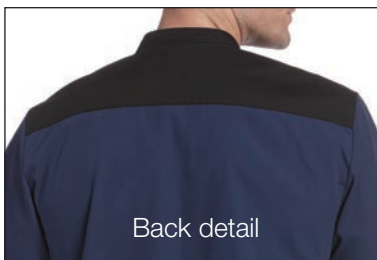


Royal Blue [cw116]

Trek Chef Jacket

- Colors: 4.6 oz. 65% polyester, 35% cotton
- White: 5.5 oz. 65% polyester, 35% cotton
- Asymmetrical
- Short sleeve
- All colors come with black trim
- Black available with graphite trim
- Back yoke
- Sizes XS-5X (Add \$4 ea. for 3X-5X)

ITEM	DESCRIPTION	QTY.	PRICE
CW1373	Trek	1-9	25.95 ea.
		10-19	23.95 ea.
		20+	21.95 ea.



Back detail



Navy [cw73]



Black [cw30]

patterns / colors

Black [cw30] White [cw40] Graphite [cw105] Black/Graphite [cw305] Royal Blue [cw116] Navy [cw73]



**Antonio Caruana
Luce**
**Vented Vibe Chef
Coat page 24**
**Traditional Poly
Blend Pant page 7**



Black [cw30]



[cw30]



[cw78]

NEW



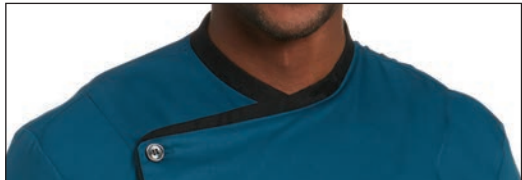
[cw152]

NEW

Vented Vibe Chef Coat

- 5.8 oz. 54% rayon, 44% polyester, 2% spandex
- Asymmetrical
- Contrast trim on collar and sleeves
- 3-division pocket on left sleeve
- Mesh vent side panels
- Side seam pockets
- Interior button to secure inside placket
- Women's companion style available on page 41
- Sizes XS-5X (Add \$4 ea. for 3X-5X)

ITEM	DESCRIPTION	QTY.	PRICE
CW5882	Vented Vibe	1-9	38.95 ea.
		10-19	36.95ea.
		20+	33.95 ea.





White with Black Piping [cwP1]

[cw40]

[cw105]

NEW

[cwP1]

[cwP6]



Black [cw30]

[cw40]

[cw30]

Classic Executive Coat

- 7 oz. 60% cotton, 40% polyester
- Graphite: 7.2 oz. 65% polyester, 35% cotton twill
- Rounded French cuffs
- Thermometer pocket on left sleeve
- Sewn underarm eyelets
- Women's companion style available on page 39
- Sizes XS-5X (Add \$4 ea. for 3X-5X)

ITEM	DESCRIPTION	QTY.	PRICE
CW5690	Classic	1-9	40.95 ea.
		10-19	38.95 ea.
		20+	35.95 ea.
CW5690	Classic w/ Piping	1-9	50.95 ea.
		10-19	48.95 ea.
		20+	45.95 ea.

Cloth-Knot Button Jacket

- 7 oz. 60% cotton, 40% polyester twill
- Stain and wrinkle resistant
- Split sleeve and breast pockets
- Long-sleeve features square French cuffs
- Cloth-knot buttons
- Sizes XS-5X (Add \$4 ea. for 3X-5X)

ITEM	DESCRIPTION	QTY.	PRICE
CW5650	Cloth-Knot Long Sleeve	1-9	35.95 ea.
		10-19	33.95 ea.
		20+	30.95 ea.

CW5610-40 Short Sleeve
(White only)



Short Sleeve White [cw40]

patterns / colors

Black [cw30] White [cw40] Red/Black [cw78] Caribbean Blue/Black [cw152] Graphite [cw105]
Black with Red Piping [cwP6] White with Black Piping [cwP1]



White [cw40]

[cw40]

[cw30]



White [cw40]

[cw40]

[cw30]

Crossover Collar Jacket

- 7 oz. 60% cotton, 40% polyester twill
- Stain and wrinkle resistant
- Square French cuffs
- Split sleeve thermometer pocket
- Cloth-covered buttons
- Sizes XS-5X (Add \$4 ea. for 3X-5X)

ITEM	DESCRIPTION	QTY.	PRICE
CW5710	Crossover	1-9	35.95 ea.
		10-19	33.95 ea.
		20+	30.95 ea.

Snap Jacket

- 7 oz. 60% cotton, 40% polyester twill
- Brushed nickel snaps
- Square French cuffs
- Split sleeve pocket
- Sizes XS-5X (Add \$4 ea. for 3X-5X)

ITEM	DESCRIPTION	QTY.	PRICE
CW5620	Snap Jacket	1-9	35.95 ea.
		10-19	33.95 ea.
		20+	30.95 ea.

SET THE TREND IN CHEFWEAR

Check out our website to find great new styles, patterns, accessories and more.

chefwear.com



[cw40]

[cw30]

Black [cw30]

Premier Flo Coat

- 6 oz. 53% polyester, 47% rayon
- Cloth-covered buttons
- Breast patch and split sleeve pockets
- Mesh underarm and back vents
- Interior button to secure inside placket
- Sizes XS-5X (Add \$4 ea. for 3X-5X)

ITEM	DESCRIPTION	QTY.	PRICE
CW4180	Premier Flo	1-9	65.95 ea.
		10-19	60.95 ea.
		20+	55.95 ea.



Mesh back vent



Underarm vent detail

patterns / colors

Black [cw30] White [cw40]



Walter Bostock
Meriwether Godsey
Organic Cotton
Traditional Coat
page 29
Tailored Cotton Pant
page 8



Daniel Bingley, Erich Lautieri
Steinhilber's

Long Sleeve Vented Lightweight
Coat page 20

Ultimate Cotton Pant page 3

Cargo Cotton Pant page 10



Black [cw30]

[cw40]

[cw30]

Cotton Vented Coat

- 6 oz. 100% cotton twill
- Breast patch and split sleeve pockets
- Cloth-covered buttons
- Square French cuffs
- Sizes XS-5X (Add \$4 ea. for 3X-5X)

ITEM	DESCRIPTION	QTY.	PRICE
CW5120	Cotton Vented	1-9	50.95 ea.
		10-19	45.95 ea.
		20+	40.95 ea.



Back vent detail



Underarm vent detail



White [cw40]



[cw40]



[cw106]



[cw105]



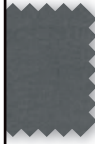
Chili [120]



[cw123]



[cw120]



[cw81]



[cw124]

Windsor Cotton Coat

- 6 oz. 100% brushed cotton twill
- Inset breast and split sleeve pockets
- Sewn underarm vents
- Rounded French cuffs
- Cloth-covered buttons
- Tailored, slim fit
- Interior button to secure inside placket
- Sizes XS-5X (Add \$4 ea. for 3X-5X)

ITEM	DESCRIPTION	QTY.	PRICE
CW5070	Windsor	1-9	55.95 ea.
		10-19	50.95 ea.
		20+	45.95 ea.

Organic Cotton Traditional Coat

- 7 oz. 100% Certified Organic cotton twill
- Breast patch and split sleeve pockets
- Sewn underarm vents
- Back yoke
- Cloth-covered buttons
- Square French cuffs
- Women's companion style available on page 38
- Sizes XS-5X (Add \$4 ea. for 3X-5X)

ITEM	DESCRIPTION	QTY.	PRICE
CW5005	Organic	1-9	55.95 ea.
		10-19	50.95 ea.
		20+	45.95 ea.

patterns / colors

Black [cw30] White [cw40] Steel Blue [cw106] Graphite [cw105] Avocado [cw123]
 Chili [cw120] Smoke [cw81] Sweet Potato [cw124]



[cw40]

Available in White Only [cw40]

Cotton Raglan Sleeve Coat

- 7.5 oz. 100% cotton twill
- Traditional design with raglan cut sleeves
- Breast patch and split sleeve thermometer pocket
- Square French cuffs
- Interior button to secure inside placket
- Cloth-knot buttons
- Sizes XS-5X (Add \$4 ea. for 3X-5X)

ITEM	DESCRIPTION	QTY.	PRICE
CW4000-40 Cotton Raglan		1-9	50.95 ea.
		10-19	45.95 ea.
		20+	40.95 ea.



[cw40]

Available in White Only [cw40]

Cotton Stud Button Coat

- 7.5 oz. 100% cotton twill
- Interchangeable color studs
- Includes one set of studs in the color of your choice
- Additional studs sold separately
- Sizes XS-5X (Add \$4 ea. for 3X-5X)

ITEM	DESCRIPTION	QTY.	PRICE
CW5400-40 Stud Button		1-9	50.95 ea.
		10-19	45.95 ea.
		20+	40.95 ea.



ITEM	DESCRIPTION	QTY.	PRICE
CW5400SB	Stud 12 Pack	1	6.00 ea.

Colors: Black [cw1], Blue [cw2], Green [cw3], Red [cw4], White [cw5], Burgundy [cw6]



Shown: 3/4 Sleeve White [cw40]



[cw40]



[cw30]



Black [cw30]



[cw30]



[cw40]

Lightweight Cotton Coat

- 6 oz. 100% cotton twill
- Cloth-knot buttons
- Interior button to secure inside placket
- Breast patch and split sleeve pocket
- Women's companion style available on page 38
- Sizes XS-5X (Add \$4 ea. for 3X-5X)

ITEM	DESCRIPTION	QTY.	PRICE
CW5551	Set-in Short Sleeve	1-9	50.95 ea.
		10-19	45.95 ea.
		20+	40.95 ea.
CW4025	Raglan 3/4 Sleeve		
CW4020	Raglan Long Sleeve		



Long Sleeve Black [cw30]

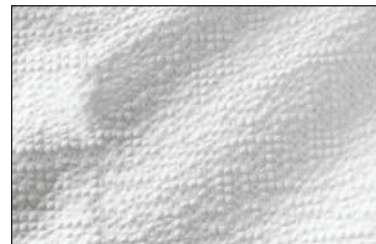


Short Sleeve Black [cw30]

Cotton Seersucker Jacket

- 5.4 oz. 100% cotton seersucker
- Split sleeve and breast patch pockets
- Back yoke
- Square pearlized buttons
- Interior button to secure inside placket
- Sizes XS-5X (Add \$4 ea. for 3X-5X)

ITEM	DESCRIPTION	QTY.	PRICE
CW5030	Seersucker	1-9	50.95 ea.
		10-19	45.95 ea.
		20+	40.95 ea.



Seersucker fabric detail

patterns / colors

Black [cw30] White [cw40]



Charcoal [cw32]



Available in White with Black Lining Only [cwL1]

Cotton Traditional Coat

- Charcoal and Black/Grey Pinstripe: 6 oz. 100% cotton twill
- White: 7.5 oz. 100% cotton twill
- White: Cloth-knot buttons
- Charcoal and Black/Grey Pinstripe: Cloth-covered buttons
- Sewn underarm vents
- Square French cuffs
- Interior button to secure inside placket
- Breast patch and split sleeve pocket
- Sizes XS-5X (Add \$4 ea. for 3X-5X)

ITEM	DESCRIPTION	QTY.	PRICE
CW5000	Traditional	1-9	50.95 ea.
		10-19	45.95 ea.
		20+	40.95 ea.
CW500T-40	Tall (White only)	1-9	53.95 ea.
		10-19	48.95 ea.
		20+	43.95 ea.

Lined Cotton Traditional Coat

- 7.5 oz. 100% cotton twill
- Cloth-covered buttons
- Sewn underarm vents
- Square French cuffs
- Interior button to secure inside placket
- Breast patch and split sleeve pocket
- Sizes XS-5X (Add \$4 ea. for 3X-5X)

ITEM	DESCRIPTION	QTY.	PRICE
CW5000L-L1	Lined	1-9	50.95 ea.
		10-19	45.95 ea.
		20+	40.95 ea.



[cw97]

Available in Denim Only [cw97]



[cw40]

Available in White Only [cw40]

Cotton Traditional Denim Coat

- 7.5 oz. enzyme-washed 100% cotton denim
- Double-needle top stitching
- Cloth-covered buttons
- Sewn underarm vents
- Square French cuffs
- Interior button to secure inside placket
- Breast patch and split sleeve pocket
- Sizes XS-5X (Add \$4 ea. for 3X-5X)

ITEM	DESCRIPTION	QTY.	PRICE
CW5000-97	Cotton Denim	1-9	50.95 ea.
		10-19	45.95 ea.
		20+	40.95 ea.

Premier Vip Royal Cotton Coat

- 6 oz. 100% royal fine line cotton
- Sewn underarm vents
- Hand-rolled cloth buttons
- Inset breast pocket
- Tailored fit
- Rounded French cuffs
- Interior button to secure inside placket
- Sizes XS-5X (Add \$4 ea. for 3X-5X)

ITEM	DESCRIPTION	QTY.	PRICE
CW4110-40	Premier VIP	1-9	80.95 ea.
		10-19	75.95 ea.
		20+	70.95 ea.

patterns / colors

White [cw40] Charcoal [cw32] Black/Grey Pinstripe [cw50] White/Black [cwL1] Denim [cw97]



Black [cw30]



Available in White Only [cw40]

Long Sleeve Executive Royal Cotton Coat

- 6 oz. 100% royal fine cotton
- Tapered
- Double breasted
- Inset breast pocket
- Sewn underarm vents
- Rounded French cuffs
- Cloth-covered buttons
- Interior button to secure inside placket
- Women's companion style available on page 36
- Sizes XS-5X (Add \$4 ea. for 3X-5X)

ITEM	DESCRIPTION	QTY.	PRICE
CW4100	Long Sleeve Executive	1-9	65.95 ea.
		10-19	60.95 ea.
		20+	55.95 ea.
CW410T-40	Tall (White only)		Add \$3 ea.
CW4100	Long Sleeve Executive w/ Piping	1-9	80.95 ea.
		10-19	75.95 ea.
		20+	70.95 ea.

Short Sleeve Executive Royal Cotton Coat

- 6 oz. 100% royal fine cotton
- Tapered
- Double breasted
- Inset breast pocket
- Cloth-covered buttons
- Interior button to secure inside placket
- Sizes XS-5X (Add \$4 ea. for 3X-5X)

ITEM	DESCRIPTION	QTY.	PRICE
CW4050-40	Short Sleeve Executive	1-9	60.95 ea.
		10-19	55.95 ea.
		20+	50.95 ea.



[cw211]

Available in Midnight Only [cw211]



[cw211]

Available in Midnight Only [cw211]

Lightweight Denim Crossover Jacket

- 7.2 oz. 100% mercerized cotton
- Pewter colored snaps
- Double needle stitch
- Back yoke
- Wide sleeve pocket for cell phone and instruments
- Long sleeve converts to 3/4
- Square French cuffs
- Sizes XS-5X (Add \$4 ea. for 3X-5X)

ITEM	DESCRIPTION	QTY.	PRICE
CW5886	Lightweight Denim	1-9	45.95 ea.
		10-19	43.95 ea.
		20+	40.95 ea.



Sleeve pocket detail

Women's Lightweight Denim Crossover Jacket

- 7.2 oz. 100% mercerized cotton
- Pewter colored snaps
- Double needle stitch
- Back yoke
- Wide sleeve pocket for cell phone and instruments
- Long sleeve converts to 3/4
- Square French cuffs
- Contoured fit
- Sizes XS-5X (Add \$4 ea. for 3X-5X)

ITEM	DESCRIPTION	QTY.	PRICE
CW5885	Lightweight Denim	1-9	45.95 ea.
		10-19	43.95 ea.
		20+	40.95 ea.

patterns / colors

Black [cw30] White [cw40] White with Black Piping [cwP1] Black with White Piping [cwP4] Midnight [cw211]



[cw40]

Available in White Only [cw40]



[cw40]

Available in White Only [cw40]

Women's Executive Royal Cotton Coat

- 6 oz. 100% royal fine-line cotton twill
- Inset breast pocket
- Sewn underarm vents
- Cloth-covered buttons
- Sizes XS-5X (Add \$4 ea. for 3X-5X)

ITEM	DESCRIPTION	QTY.	PRICE
CW4125-40	Royal Cotton	1-9	65.95 ea.
		10-19	60.95 ea.
		20+	55.95 ea.
CW412T-40	Tall	1-9	68.95 ea.
		10-19	63.95 ea.
		20+	58.95 ea.

Women's Empress Royal Cotton Coat

- 6 oz. 100% royal fine-line cotton twill
- Inset breast pocket
- Princess seams
- Sewn underarm vents
- Cloth-covered buttons
- Sizes XS-5X (Add \$4 ea. for 3X-5X)

ITEM	DESCRIPTION	QTY.	PRICE
CW4175-40	Empress Royal	1-9	65.95 ea.
		10-19	60.95 ea.
		20+	55.95 ea.

SET THE TREND IN CHEFWEAR

Check out our website to find great new styles, patterns, accessories and more.

chefwear.com



[cw40]

Available in White Only [cw40]



[cw40]

[cw30]

[cw118]

Cornflower [cw118]

Women's Nouveaux Royal Cotton Coat

- 6 oz. 100% royal fine-line cotton twill
- Princess seams
- Two side pockets
- Sewn underarm vents
- Tie-back
- Cloth-covered buttons
- Sizes XS-5X (Add \$4 ea. for 3X-5X)

ITEM	DESCRIPTION	QTY.	PRICE
CW5210-40 Nouveaux		1-9	65.95 ea.
		10-19	60.95 ea.
		20+	55.95 ea.

Women's Sterling Jacket

- 6 oz. 53% polyester, 47% rayon
- Wrinkle resistant
- Two side pockets
- Sewn underarm vents
- Cloth-covered buttons
- Sizes XS-5X (Add \$4 ea. for 3X-5X)

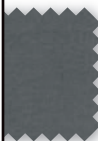
ITEM	DESCRIPTION	QTY.	PRICE
CW5220 Sterling		1-9	65.95 ea.
		10-19	60.95 ea.
		20+	55.95 ea.

patterns / colors

Black [cw30] White [cw40] Cornflower [cw118]



[cw123]



[cw81]

Avocado [cw123]



[cw40]



[cw30]

Black [cw30]

Women's Organic Cotton Traditional Coat

- 7 oz. 100% Certified Organic cotton twill
- Breast patch and split sleeve pockets
- Cloth-covered buttons
- Sewn underarm vents
- Sizes XS-5X (Add \$4 ea. for 3X-5X)

ITEM	DESCRIPTION	QTY.	PRICE
CW5021	Organic	1-9	55.95 ea.
		10-19	50.95 ea.
		20+	45.95 ea.

Women's Lightweight Cotton Jacket

- 6 oz. 100% cotton twill
- Breast patch and split sleeve pockets
- Cloth-knot buttons
- Sewn underarm vents
- Sizes XS-5X (Add \$4 ea. for 3X-5X)

ITEM	DESCRIPTION	QTY.	PRICE
CW5020	Long Sleeve	1-9	50.95 ea.
		10-19	45.95 ea.
		20+	40.95 ea.

CW5025 3/4 Sleeve

CW5250-40 Short Sleeve (White only)



3/4 Sleeve Black [cw30]



Short Sleeve White [cw40]



White [cw40]



[cw40]



[cwP1]



[cw105]

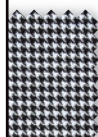
NEW



European Houndstooth [cw11]



[cwP1]



[cw11]



[cw44]

Women's Classic Executive Coat

- 7 oz. 60% cotton, 40% polyester
- Graphite: 7.2 oz. 65% polyester, 35% cotton twill
- Double-breasted
- Inset breast pocket on left chest
- 2-division pocket on left sleeve
- Rounded French cuffs
- Cloth-covered buttons
- Underarm eyelets
- Sizes XS-5X (Add \$4 ea. for 3X-5X)

ITEM	DESCRIPTION	QTY.	PRICE
CW5695	Classic	1-9	40.95 ea.
		10-19	38.95 ea.
		20+	35.95 ea.
CW5695	Classic w/ Piping	1-9	50.95 ea.
		10-19	48.95 ea.
		20+	45.95 ea.

Vogue Chef Coat

- Houndstooth: 6.5 oz. 65% polyester, 35% cotton
- White with Black Piping: 6.0 oz. 65% polyester, 35% cotton
- Stand up collar
- Piping along collar, placket, and front pockets
- Lower inset pockets
- Three-quarter sleeve
- Notch cuff sleeves
- Instrument pocket on left sleeve
- Contrast plastic buttons
- Sizes XS-4X (Add \$4 ea. for 3X-4X)

ITEM	DESCRIPTION	QTY.	PRICE
CW4461	Vogue	1-9	40.95 ea.
		10-19	35.95 ea.
		20+	30.95 ea.

patterns / colors

Black [cw30] White [cw40] Avocado [cw123] Smoke [cw81] Graphite [cw105]
 White with Black Piping [cwP1] European Houndstooth [cw11] Pink Houndstooth [cw44]



White [cw40]



Black [cw30]

Women's Long Sleeve Vented Lightweight Chef Coat

- 4.5 oz. 65% polyester, 35% cotton twill
- Breast patch pocket and split sleeve pocket
- Back inverted pleat with mesh
- Underarm mesh vent
- Square French cuffs
- Cloth-covered buttons
- Contoured fit
- Sizes XS-5X (Add \$4 ea. for 3X-5X)

ITEM	DESCRIPTION	QTY.	PRICE
CW5665	Vented	1-9	45.95 ea.
	Lightweight	10-19	43.95 ea.
		20+	40.95 ea.

Women's Short Sleeve Vented Lightweight Chef Coat

- 4.5 oz. 65% polyester, 35% cotton twill
- Breast patch pocket and split sleeve pocket
- Back inverted pleat with mesh vent
- Underarm mesh vent
- Cloth-covered buttons
- Contoured fit
- Sizes XS-5X (Add \$4 ea. for 3X-5X)

ITEM	DESCRIPTION	QTY.	PRICE
CW5666	Vented	1-9	40.95 ea.
	Lightweight	10-19	38.95 ea.
		20+	35.95 ea.



Back detail



[cw30]



[cw78]
NEW



[cw152]
NEW

Black [cw30]

Women's Vented Vibe Chef Coat

- 5.8 oz. 54% rayon, 44% polyester, 2% spandex
- Asymmetrical
- Contrast trim on collar and sleeves
- 3-division instrument pocket on left sleeve
- Mesh vent side panels
- Side seam pockets
- Interior button to secure inside placket
- Sizes XS-5X (Add \$4 ea. for 3X-5X)

ITEM	DESCRIPTION	QTY.	PRICE
CW5881	Vented Vibe	1-9	38.95 ea.
		10-19	36.95 ea.
		20+	33.95 ea.



patterns / colors

Black [cw30] White [cw40] Red/Black [cw78]
Caribbean Blue/Black [cw152]



Lorraine Eaton
Stove
Women's Vented Vibe
Chef Coat page 41
Chef Leggings page 13



White [cw40]



Black [cw30]

Women's Long Sleeve Primary Cloth-Knot Button Jacket

- 7.5 oz. 65% polyester, 35% cotton twill
- Breast patch and split sleeve pockets
- Cloth-knot buttons
- Tailored waist with side slits
- Square French cuffs
- Sizes XS-5X (Add \$4 ea. for 3X-5X)

ITEM	DESCRIPTION	QTY.	PRICE
CW4430-30	Long Sleeve	1-23	23.95 ea.
	Black	24+	20.95 ea.
CW4430-40	Long Sleeve	1-23	17.95 ea.
	White	24+	15.95 ea.

Women's Short Sleeve Primary Cloth-Knot Button Jacket

- 7.5 oz. 65% polyester, 35% cotton twill
- Breast patch and split sleeve pockets
- Cloth-knot buttons
- Tailored waist with side slits
- Sizes XS-5X (Add \$4 ea. for 3X-5X)

ITEM	DESCRIPTION	QTY.	PRICE
CW4460-30	Short Sleeve	1-23	21.95 ea.
	Black	24+	19.95 ea.
CW4460-40	Short Sleeve	1-23	15.95 ea.
	White	24+	13.95 ea.

SET THE TREND IN CHEFWEAR

Check out our website to find great new styles, patterns, accessories and more.

chefwear.com



Hot Pink [cw126]

Women's Long Sleeve Primary Plastic Button Jacket

- 7.5 oz. 65% polyester, 35% cotton twill
- Durable, wrinkle resistant fabric
- Breast patch and split sleeve pockets
- Plastic buttons
- Tailored waist with side slits
- Square French cuffs
- Sizes XS-5X (Add \$4 ea. for 3X-5X)

ITEM	DESCRIPTION	QTY.	PRICE
CW4420	Long Sleeve	1-23	22.95 ea.
	Colors	24+	19.95 ea.
CW4420-40	Long Sleeve	1-23	16.95 ea.
	White	24+	14.95 ea.



[cw30]



[cw40]



[cw78]



[cw127]



[cw126]

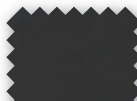


White [cw40]

Women's Short Sleeve Primary Plastic Button Jacket

- 7.5 oz. 65% polyester, 35% cotton twill
- Durable, wrinkle resistant fabric
- Breast patch and split sleeve pockets
- Plastic buttons
- Tailored waist with side slits
- Sizes XS-5X (Add \$4 ea. for 3X-5X)

ITEM	DESCRIPTION	QTY.	PRICE
CW4465	Short Sleeve	1-23	20.95 ea.
	Colors	24+	18.95 ea.
CW4465-40	Short Sleeve	1-23	14.95 ea.
	White	24+	12.95 ea.



[cw30]



[cw40]



[cw127]



[cw126]

patterns / colors

Black [cw30] White [cw40] Red [cw78] Purple [cw127] Hot Pink [cw126]



Navy [cw73]

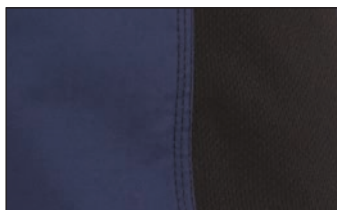


Steel Grey [cw100]

Women's Side Mesh Cook Shirt

- 4.7 oz. 53% cotton, 44% polyester, 3% spandex
- Short sleeves
- Side mesh panels
- Triple needle contrast topstitch
- Curved hem
- Sizes XS-5X (Add \$4 ea. for 3X-5X)

ITEM	DESCRIPTION	QTY.	PRICE
CW1334	Side Mesh	1-9	22.95 ea.
		10-19	21.95 ea.
		20+	19.95 ea.



Fabric detail

Men's Side Mesh Cook Shirt

- 4.7 oz. 53% cotton, 44% polyester, 3% spandex
- Short sleeves
- Side and underarm mesh panels
- Single needle contrast topstitch
- Sizes XS-5X (Add \$4 ea. for 3X-5X)

ITEM	DESCRIPTION	QTY.	PRICE
CW1333	Side Mesh	1-9	22.95 ea.
		10-19	21.95 ea.
		20+	19.95 ea.



Graphite [cw105]



[cw40]



[cw30]



[cw100]



[cw105]



Black [cw30]



[cw40]



[cw30]



[cw100]



[cw105]

Women's Station Shirt

- 4.25 oz. 65% polyester, 35% cotton
- Short sleeves
- Ring-snap closure
- Side vents
- Back yoke with center seam
- Left breast patch pocket
- Sizes XS-5X (Add \$4 ea. for 3X-5X)

ITEM	DESCRIPTION	QTY.	PRICE
CW1370	Station Shirt	1-9	15.95 ea.
		10-19	14.95 ea.
		20+	13.95 ea.

Men's Station Shirt

- 4.25 oz. 65% polyester, 35% cotton
- Short sleeves
- Ring-snap closure
- Side vents
- Back yoke with center seam
- Left breast patch pocket
- Sizes XS-5X (Add \$4 ea. for 3X-5X)

ITEM	DESCRIPTION	QTY.	PRICE
CW1371	Station Shirt	1-9	15.95 ea.
		10-19	14.95 ea.
		20+	13.95 ea.

patterns / colors

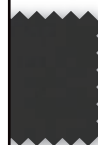
Black [cw30] White [cw40] Navy [cw73] Steel Grey [cw100] Graphite [cw105]



Luke Brigham
Nouvelle Restaurant
Western Cook Shirt
page 46
Traditional Cotton
Pant page 8



Black [cw30]



[cw30]



[cw40]

Western Cook Shirt

- 6 oz. 65% polyester, 35% cotton twill
- Horn colored snaps
- Double needle stitching
- Cross tack detail
- Two chest pockets with flaps
- Back western yoke
- Wide sleeve pocket for cell phone and instruments
- Sizes XXS-5X (Add \$4 ea. for 3X-5X)

ITEM	DESCRIPTION	QTY.	PRICE
CW4310	Western	1-9	34.95 ea.
		10-19	32.95 ea.
		20+	29.95 ea.



Back detail



[cw30]

Available in Black Only [cw30]

Mandarin Collar Chef Shirt

- 6 oz. 100% cotton twill
- Mandarin collar
- Short sleeves
- Cloth-covered buttons
- Sizes XS-5X (Add \$4 ea. for 3X-5X)

ITEM	DESCRIPTION	QTY.	PRICE
CW1392-30	Mandarin Collar	1-9	26.95 ea.
		10-19	24.95 ea.
		20+	21.95 ea.



Black [cw30]

Boyfriend Chef Shirt

- Black/White: 6.0 oz. 65% polyester, 35% cotton twill
- Graphite: 4.6 oz. 65% polyester, 35% cotton poplin
- Modified Mandarin collar
- Left breast pocket with inverted pleat
- Three-quarter sleeve with notch cuff
- Split sleeve pocket
- Front and back darts
- Back yoke, box pleat and locker loop
- Curved hem
- Sizes XS-5X (Add \$4 ea. for 3X-5X)

ITEM	DESCRIPTION	QTY.	PRICE
CW4480	Boyfriend	1-9	27.95 ea.
		10-19	25.95 ea.
		20+	22.95 ea.

patterns / colors

Black [cw30] White [cw40] Graphite [cw105]



Red [cw78]



Available in Black Only [cw30]

Short Sleeve Snap Chef Shirt

- 4.25 oz. 65/35 polyester/cotton poplin
- Wrinkle resistant
- Breast patch pocket
- Front snap closures
- Pointed collar
- Sizes XS-5X (Add \$4 ea. for 3X-5X)

ITEM	DESCRIPTION	QTY.	PRICE
CW1390	Snap Colors	1-23	15.95 ea.
		24+	13.95 ea.
CW1390-40	Snap White	1-23	12.95 ea.
		24+	11.95 ea.

Performance Chef Shirt

- 4 oz. 100% polyester poplin and mesh
- Wicking and anti-odor finish
- Plastic 4-hole buttons
- Sizes XS-5X (Add \$4 ea. for 3X-5X)

ITEM	DESCRIPTION	QTY.	PRICE
CW1383-30	Performance	1-9	26.95 ea.
		10-19	24.95 ea.
		20+	21.95 ea.

patterns / colors

Black [cw30] White [cw40] Red [cw78] Royal Blue [cw116]

**Toque**

All hats are one size

- 6 oz. 100% cotton
- Adjustable velcro closure

ITEM	DESCRIPTION	QTY.	PRICE
CW1400	Toque	1-11	15.95 ea.
		12+	12.95 ea.

Convertible ChefBand®

- Lightweight 4.25 oz. 100% cotton
- Elastic back for snug fit

ITEM	DESCRIPTION	QTY.	PRICE
CW1460	Chefband	1-11	11.95 ea.
		12+	9.95 ea.

Mesh Top Skull Cap

- 6 oz. 100% cotton band
- 4.5 oz. 100% polyester mesh crown
- Elastic band in back

ITEM	DESCRIPTION	QTY.	PRICE
CW1433	Mesh Top Skull	1-11	11.95 ea.
		12+	9.95 ea.

Adjustable Mesh Top Skull Cap

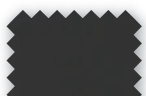
- 4.6 oz. 65% polyester, 35% cotton poplin
- 3 oz. mesh top ventilation
- Velcro back adjustment

ITEM	DESCRIPTION	QTY.	PRICE
CW1432	Adjustable Mesh Top	1-11	11.95 ea.
		12+	9.95 ea.

Skull Cap

- 6 oz. 100% cotton
- Elastic band in back

ITEM	DESCRIPTION	QTY.	PRICE
CW1430	Skull Cap	1-11	11.95 ea.
		12+	9.95 ea.

Regular Skull Cap available in 8 colors/patterns:

[cw30]



[cw40]



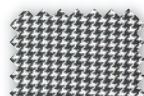
[cw78]



[cw35]



[cw01]



[cw11]



[cw50]



[cw32]

patterns / colors

Black [cw30] White [cw40] Red [cw78] Black Chalkstripe [cw35] Navy Chalkstripe [cw01]
 European Houndstooth [cw11] Black/Grey Pinstripe [cw50] Charcoal [cw32] Graphite [cw105]



Tiffany Hale & Rob Asbury
Todd Jurich's Bistro

From Front of the House to Back of the House, Chefwear does it all.

At Chefwear, we never compromise on quality and service. Our mission is it to provide you affordable, quality products that look and feel great. We believe you deserve the best, that's why we backup our product with our award winning customer service. No detail is too big or two small to ensure you have the final product you need. After all, exceeding our customer's expectations is at the core of what we do from innovation to design we believe in creating great product for great people.

barwear
BY CHEFWEAR

chefwear.com/greetwear

greet
BY CHEFWEAR

chefwear.com/barwear



LOGO EMBROIDERY

Embroider your company's logo or custom graphic for a polished uniform look. Logo embroidery is available on most garments in a variety of locations to best showcase your graphic. Logo embroidery prices are based on volume, as well as number of stitches and colors required. Please contact Customer Service for more information or for a personalized quote.



LETTERING OPTIONS

Standard text embroidery is available in a variety of fonts to fit your company's unique look. Most garments allow for 14 to 24 characters per line, depending upon garment size. \$4.00 per line.

Block **Old English** *Snow Script* **Storytime**
Crescendo **Evening News** *Vertical Script*

ORDERING

Phone: Call 800-568-2433
Monday through Friday between
8 a.m. and 5 p.m. Central time.

Online: Visit us at chefwear.com
Ordering is available 24 hours a day,
7 days a week.

Fax: 800-252-1832

PAYMENT OPTIONS

Credit Card: We accept Visa, MC,
Discover, and American Express.

Check: We accept company
checks or money orders for
mail orders only.

JACKET/SHIRT SIZING

	XS	S	M	L	XL	2X	3X	4X	5X
Male US	30-34	36-38	40-42	44-46	48-50	52-54	56-58	60-62	64-66
Europe	42	44-46	48-52	54-56	58-60	62-64	66-68	70-72	74-76
Female US	2	4-6	8-10	12-14	16-18	20W-22W	24W-26W	28W-30W	32W
Europe	32	34-36	38-40	42-44	46-48	50-52	54-56	58-60	62-64

PANT SIZING

Inseam: 32.5	XS	S	M	L	XL	2X	3X	4X	5X
Male US	22-26	28-30	32-34	36-38	40-42	44-46	48-50	52-54	56-58
Europe	36	38-40	42-44	46-48	50-54	56-58	60-62	65-66	68-70
Female US	2	4-6	8-10	12-14	16-18	20W-22W	24W-26W	28W-30W	32W
Europe	36	38-40	42-44	46-48	50-54	56-58	60-62	64-66	68-70

COLOR OPTIONS

Choose a thread color below to match your company's color scheme. Custom colors are available. Please contact our Customer Care Team for details.

Red (4) **Grey (14)** **Green (3)** **Black (1)**

Blue (2) **Hunter (6)** **Brown (9)** **Navy (8)**

Burgundy (7) **Purple (13)** **White (5)** **Pink (12)**

Yellow (17) **Orange (10)** **Silver (15)** **Gold (16)**

Light Blue (11) **Metallic Gold (18)** **Metallic Silver (19)**

SHIPPING/DELIVERY

Chefwear's preferred shipping method is USPS or UPS. Your purchase should arrive ground within 3-6 working days of placing your order. Please allow extra time for embroidered or embellished orders. Next day and second day shipping methods are available on request.

RETURNS & EXCHANGES 800-568-2433

Your satisfaction is important to us. Returns or exchanges will be accepted within 30 days of your receipt of order. All embroidered or embellished items are non-refundable. Customers are responsible for return shipping charges. Please call 800-568-2433 for your Return Merchandise Authorization (RMA). Send return items to: Chefwear Returns, 8410 W. Sandridge Road, Olive Branch, MS 38654

CARE INSTRUCTIONS

Please launder before making any alterations. Machine wash in warm water with like colors only. **DO NOT BLEACH!** Tumble dry using **LOW HEAT** and remove promptly. **DO NOT DRY CLEAN UNLESS STATED OTHERWISE ON GARMENT TAG!**



Black Denim [cw112]

Denim Waist Apron

- 8.5 oz. 100% cotton
- Layered patch pockets
- Instrument section on each pocket
- Contrast reverse out detail
- Dye lots may vary in shade
- Length: 18"
- One size

ITEM	DESCRIPTION	QTY.	PRICE
CW1672	Waist	1-11	16.95 ea.
		12-23	15.95 ea.
		24+	14.95 ea.



Rail Road Stripe [cw113]

Denim Bib Apron

- 8.5 oz. 100% cotton
- 2 patch pockets
- Adjustable neck strap
- Contrast reverse out detail
- Dye lots may vary in shade
- Length: 32.5"
- One size

ITEM	DESCRIPTION	QTY.	PRICE
CW1671	Bib	1-11	22.95 ea.
		12-23	21.95 ea.
		24+	20.95 ea.



Black Denim [cw112]

Denim Cobbler Apron

- 8.5 oz. 100% cotton
- Layered patch pockets across bottom
- Adjustable neck strap
- Contrast reverse out detail
- Dye lots may vary in shade
- Length: 25"
- One size

ITEM	DESCRIPTION	QTY.	PRICE
CW1674	Cobbler	1-11	21.95 ea.
		12-23	20.95 ea.
		24+	19.95 ea.



[cw111]

[cw112]

[cw113]

patterns / colors

Indigo Denim [cw111] Black Denim [cw112] Rail Road Stripe [cw113]



All denim aprons come with metal rivets.



Hibiscus Heaven [cw253]

Classic Cotton Bib Apron

- 39"W x 35"L
- 6 oz. 100% cotton
- Adjustable, flapless neck loop
- Roomy patch pocket

ITEM	DESCRIPTION	QTY.	PRICE
CW1650	Classic Bib	1-11	18.95 ea.
		12-23	17.95 ea.
		24+	16.95 ea.



[cw250]
NEW



[cw251]
NEW



[cw15]



[cw35]



[cw205]



[cw50]



[cw253]
NEW



[cw67]



[cw40]



[cw97]



[cw87]



[cw01]



[cw207]



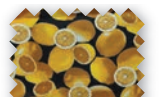
[cw51]



[cw06]



[cw30]



[cw21]

patterns / colors

Chocolate [cw15] Black Chalkstripe [cw35] Black on Black Stripe [cw205] Black/Grey Pinstripe [cw50] Navy Chalkstripe [cw01]
Cupcakes [cw67] White [cw40] Denim [cw97] Flying Pigs [cw87] Lemons [cw21] Veggies [cw207] Carnivale [cw51]
Utensils [cw06] Black [cw30] Prime Cuts [cw250] Coastal Harvest [cw251] Hibiscus Heaven [cw253]



Black [cw30]

Classic Spun Poly Bib Apron

- 39"W x 35"L
- 7 oz. 100% spun polyester
- Stain-resistant
- Adjustable, flapless neck loop
- Roomy patch pocket

ITEM	DESCRIPTION	QTY.	PRICE
CW1690	Spun Poly Bib	1-11	14.95 ea.
		12+	13.95 ea.



[cw40]



[cw30]



Sweet Potato [cw124]



[cw123]



[cw120]



[cw124]



Black [cw30]



[cw30]



[cw35]



[cw01]

Organic Bib Apron

- 39"W x 35"L
- 7 oz. 100% Certified Organic cotton
- Adjustable, flapless neck loop
- Roomy patch pocket

ITEM	DESCRIPTION	QTY.	PRICE
CW1645	Organic	1-11	21.95 ea.
		12-23	20.95 ea.
		24+	19.95 ea.

Adjustable Bib Apron

- 36"W x 34"L
- 6 oz. 100% cotton
- Adjustable neck loop and wide ties
- Full coverage bib

ITEM	DESCRIPTION	QTY.	PRICE
CW1681	Adjustable Bib	1-11	18.95 ea.
		12-23	17.95 ea.
		24+	16.95 ea.

patterns / colors

Avocado [cw123] Chile [cw120] Sweet Potato [cw124] Black [cw30]
Black Chalkstripe [cw35] Navy Chalkstripe [cw01]



Avocado [cw123]



[cw30]

Available in Black Only [cw30]

2-Pocket Bib Apron

- 7-7.5 oz. 65% polyester, 35% cotton twill
- 25.5"W x 30"L
- Adjustable neck
- Divided front pocket with instrument division
- One size
- Plain Front version (CW1649) available online

ITEM	DESCRIPTION	QTY.	PRICE
CW1648	2-Pocket Bib	1-11	9.95 ea.
		12+	8.95 ea.

2-Pocket Tuxedo Apron

- 7.2 oz. 65% polyester, 35% cotton twill
- 29"W x 25.5"L (length from center front)
- Button adjustable neck
- Divided front pocket with double needle stitch
- One size

ITEM	DESCRIPTION	QTY.	PRICE
CW1663	Tuxedo	1-11	10.95 ea.
		12+	9.95 ea.



[cw123]



[cw40]



[cw105]



[cw115]



[cw116]



[cw126]



[cw178]



[cw153]



[cw30]

patterns / colors

White [cw40] Black [cw30] Avocado [cw123] Graphite [cw105] Silver [cw115]
 Royal [cw116] Hot Pink [cw126] Red Tomato [cw178] Khaki [cw153]



[cwP1]



Side detail

Available in White with Black Piping Only [cwP1]



Chocolate [cw15]

Royalty Apron

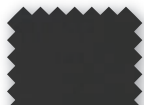
- 39"W x 28"L
- 7.5 oz. 100% cotton twill
- Tapered sides
- Black piping

ITEM	DESCRIPTION	QTY.	PRICE
CW1630-P1	Royalty	1-11	18.95 ea.
		12+	15.95 ea.

Wide-Tie Bistro Apron

- 36"W x 39"L
- 6 oz. 100% cotton twill
- Black on Black Stripe: 7 oz. 60% cotton, 40% polyester
- Wide top band
- Wide divided pocket

ITEM	DESCRIPTION	QTY.	PRICE
CW1620	Bistro	1-11	15.95 ea.
		12+	12.95 ea.



[cw30]



[cw15]



[cw40]



[cw50]



[cw205]



[cw35]

patterns / colors

Black [cw30] White [cw40] Chocolate [cw15] Black/Grey Pinstripe [cw50]
Black on Black Stripe [cw205] Black Chalkstripe [cw35]



White [cw40]



[cw40]



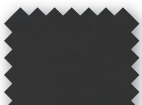
[cw30]

1-Pocket Long-Waist Bistro Apron

- 27"W x 32"L
- 7.5 oz. 65/35 polyester/cotton twill
- Stain-resistant

ITEM	DESCRIPTION	QTY.	PRICE
CW1675	1-Pocket	1-11	11.95 ea.
		12+	9.95 ea.

3-Pocket Waist Apron available in 4 colors/patterns:



[cw30]



[cw105]



[cw178]



[cw153]

patterns / colors

Black [cw30] Graphite [cw105] Red Tomato [cw178] Khaki [cw153]



Black [cw30]



[cw40]



[cw30]

2-Pocket Mid-Length Apron

- 33"W x 22.5"L
- 7.5 oz. 65/35 polyester/cotton twill
- Stain-resistant

ITEM	DESCRIPTION	QTY.	PRICE
CW1610	2-Pocket	1+	8.95 ea.



Khaki [cw153]

3-Pocket Waist Apron

- 7-7.5 oz. 65% polyester, 35% cotton twill
- 22.5"W x 15"L
- 3-division pocket
- One size

ITEM	DESCRIPTION	QTY.	PRICE
CW1647	3-Pocket Waist	1-11	7.95 ea.
		12+	6.95 ea.



Midnight [cw211]



Oregano [cw214]

The Market Bib Apron

- 8 oz. 100% cotton canvas
- 30"W x 32.5"L
- Adjustable neck
- Double needle stitching
- Cross tack detail
- Contrast flat braid ties
- Roomy kangaroo pockets with instrument dividers
- One size

ITEM	DESCRIPTION	QTY.	PRICE
CW1685	Market Bib	1-9	34.95 ea.
		10-19	33.95 ea.
		20+	31.95 ea.

The Market Waist Apron

- 8 oz. 100% cotton canvas
- 30"W x 21.5"L
- Double needle stitching
- Cross tack detail
- Contrast flat braid ties
- Roomy kangaroo pockets with instrument dividers
- One size

ITEM	DESCRIPTION	QTY.	PRICE
CW1688	Market Waist	1-9	24.95 ea.
		10-19	23.95 ea.
		20+	22.95 ea.

patterns / colors

Black [cw30] Midnight [cw211] Butterscotch [cw212] Oatmeal [cw213] Oregano [cw214]



Kara Paxton
Café Provencal
Denim Cobbler Apron
page 52
Chef Leggings page 13



Butterscotch [cw212]



[cw211]



[cw212]



[cw213]



[cw214]



[cw30]

The Ranch Bib Apron

- 8 oz. 100% cotton canvas
- 27"W x 33"L
- Adjustable cross back ties
- Double needle stitching
- Cross tack detail
- Contrast flat braid ties
- Large triple divided pocket
- Instrument pocket
- One size



Back detail

ITEM	DESCRIPTION	QTY.	PRICE
CW1686	Ranch Bib	1-9	36.95 ea.
		10-19	35.95 ea.
		20+	33.95 ea.

patterns / colors

Black [cw30] Midnight [cw211] Butterscotch [cw212]
Oatmeal [cw213] Oregon [cw214]

chefwear®

8410 W. Sandidge Rd.
Olive Branch, MS 38654

barwear®
BY CHEFWEAR

greet™
BY CHEFWEAR

PRST STD
U.S. POSTAGE
PAID
CHEFWEAR



chefwear®

8410 W. Sandidge Rd.
Olive Branch, MS 38654

barwear®
BY CHEFWEAR

greet™
BY CHEFWEAR

PRST STD
U.S. POSTAGE
PAID
CHEFWEAR

